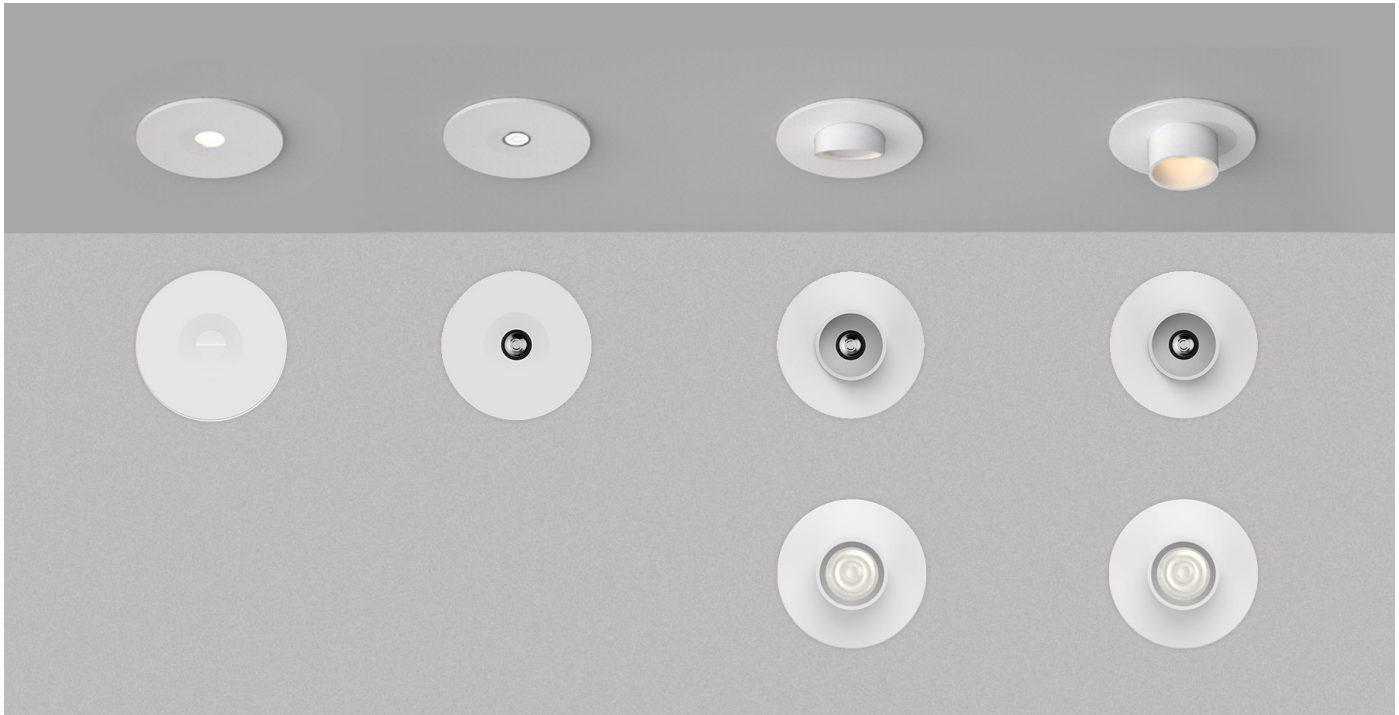


# LD70, LD70-OP & LD70D

Ultra Shallow Recessed Shelf Light



Data sheet - Page 1



The LD70, LD70-OP and the LD70D range of light fittings is a series of extremely shallow recessed LED downlights. They feature minimal bezel thicknesses and are available with an optional half or fully cowlled bezel to give optimal glare control, making them ideal for ultra discreet lighting in display cabinets or under shelving.

The LD70D is available with our standard narrow beam optic at a recess depth of 17mm, which allows for continuity with other LightGraphix products. Alternatively, where there is a requirement for an even shallower recess depth, the LD70 uses our new range of miniature optics and requires a recess depth of only 13mm. LD70-OP has an opal diffuser and no optic, creating a very wide, diffused spread of light.

Both LD70 + LD70D are available with half cowl (HC) & full cowl (FC) options.

## Key Features

- Very minimal product depth, only 13mm void needed (17mm required if LD70D is specified)
- Ideal for shelf or under cabinet lighting
- Spring clips designed for solid cabinets / shelving
- Polarity protection on chip
- Can be mounted directly into surface without the need for a thermal void
- Optional half & full cowlled bezels available for further glare control
- Interchangeable bezels
- Wide range of beam angles & optics suitable for all projects
- Minimal bezel thickness
- 93 CRI LED in warm white.
- Available with switched, 0-10V, DMX, DALI or Mains dimmable drivers

## Specification

Applications						
Beam Angles*	NB, MB, WB, SWB					
LED type	Cree XPG2					
Colour temperature	2700K*** / 3000K			5000K		
Drive Current (mA)	350	500	700	350	500	700
LED power** (W)	1.2W	1.7W	2.4W	1.2W	1.7W	2.4W
CRI (typical)	93	93	93	75	75	75
Forward voltage (V) <sub>100</sub>	3.0V	3.2V	3.4V	3.0V	3.2V	3.4V
LD70-OP Delivered lumens(L <sub>100</sub> )	42	51	64	51	62	78
Lumens per circuit watt	35	30	27	42	36	32
LD70 Delivered lumens(L <sub>100</sub> )	93	114	150	113	139	182
Lumens per circuit watt	77	67	62	94	81	75
LD70D Delivered lumens(L <sub>100</sub> )	128	151	200	130	182	242
Lumens per circuit watt	89	88	83	108	107	100
LED lifetime (to 70% lumen maintenance)	50,000hrs at a max ambient temperature of 35°C (if specifying fitting in ambient temperatures of up to 45°C run at 500mA max)					
Materials	Aluminium body and bezel					
Wiring	Comes pre-wired with flat 2-core 100mm lead, can be specified with up to 10m at extra cost					
IP rating	IP20					

\* NB available only in LD70D, SWB available only in LD70-OP

\*\*LED wattage includes losses associated with using an 85% efficient driver

\*\*\*2700K lumen output is 12% lower than the 3000K figure listed

4000K lumen output is 14% higher than the 3000K figure listed (80 CRI)


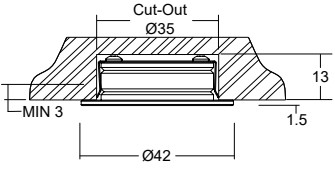

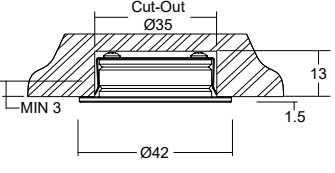

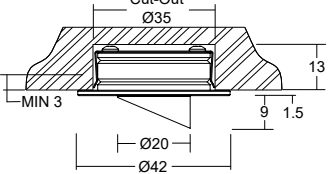

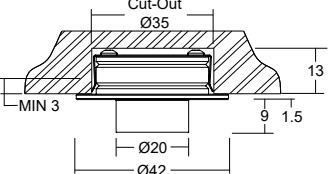

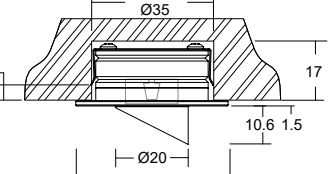

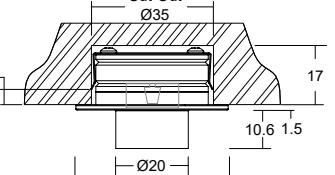
# LD70, LD70-OP & LD70D



Ultra Shallow Recessed Shelf Light

Data sheet - Page 2

## Comparison Guide

	Product Diagram	Void Recess Depth	Beam Angle	Drive Current	Narrow Beam Available
<b>Opal Diffusion</b>					
 <b>LD70-OP</b>		13mm	120°	350mA, 500mA, 700mA	N
<b>Lisa Micro Optics</b>					
 <b>LD70</b>		13mm	31°, 55°	350mA, 500mA, 700mA	N
 <b>LD70-HC</b>		13mm	31°, 55°	350mA, 500mA, 700mA	N
 <b>LD70-FC</b>		13mm	31°, 55°	350mA, 500mA, 700mA	N
<b>Tina Mini Optics - Used in LD51 / LD56 / LD71</b>					
 <b>LD70D-HC</b>		17mm	12°, 31°, 48°	350mA, 500mA, 700mA	Y
 <b>LD70D-FC</b>		17mm	12°, 31°, 48°	350mA, 500mA, 700mA	Y

\*The Tina optic is the standard optic for all LightGraphix products that use the Cree XPG2 LED. It is recommended to use the LD70D if it is part of a project using a range of Lightgraphix products.

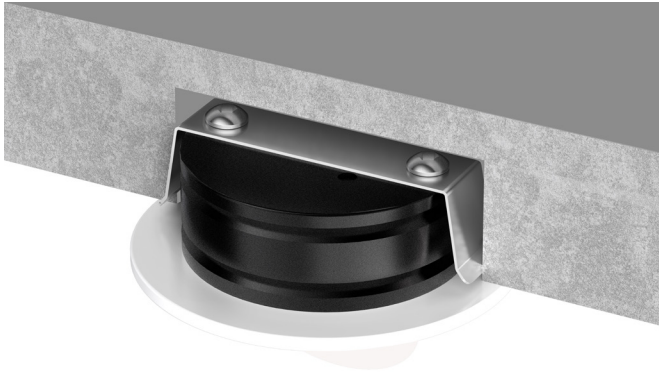
# LD70, LD70-OP & LD70D

Ultra Shallow Recessed Shelf Light



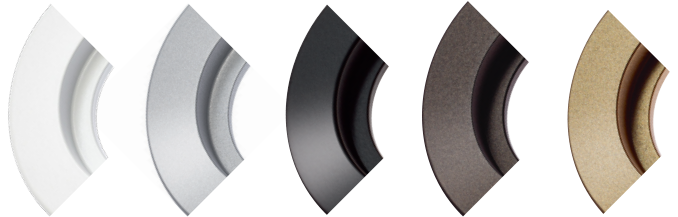
Data sheet - Page 3

## Shallow Recessed Void

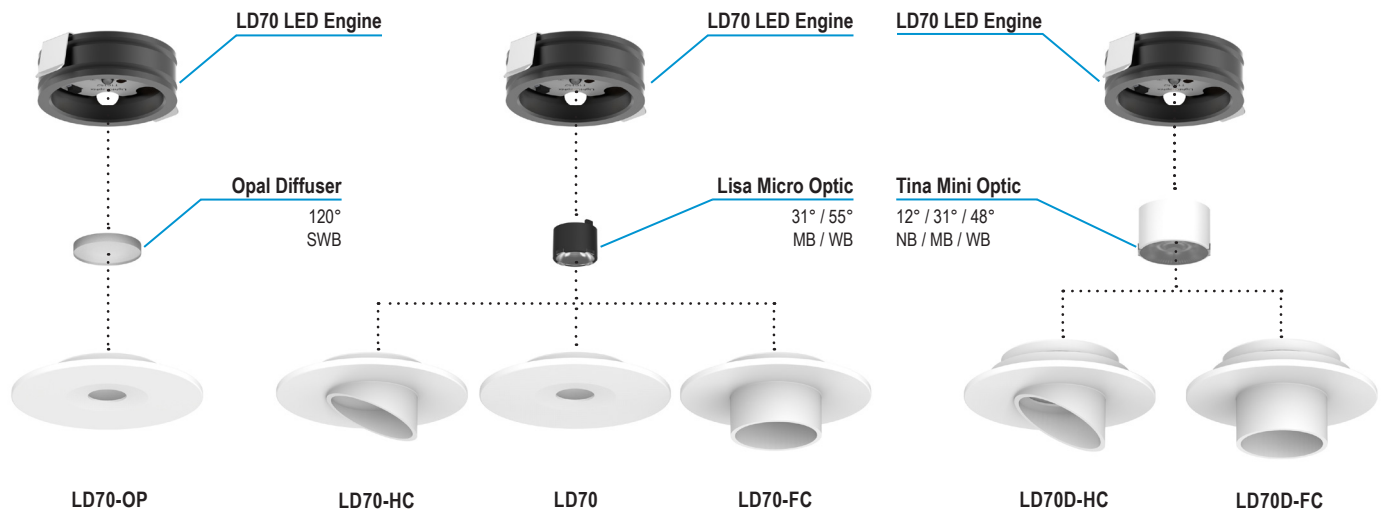


## Finish Options

High quality machined bezel available in paint finish white (RAL 9016) / silver / black / RAL / antique bronze / satin antique brass. Other paint finishes available. Contact our sales team for further details.



## Product Family



LD70-HC

# LD70, LD70-OP & LD70D

Ultra Shallow Recessed Shelf Light



Data sheet - Page 4

## LD70



Product code      LED colour      Lens angle      Bezel finish

LD70 - 350  
- 500  
- 700

Example: LD70-350 / LW30 / MB / RAL 9001

### Product codes with output options

350mA	LD70-350	500mA	LD70-500	700mA	LD70-700
1.2W	LD70HC-350	1.7W	LD70HC-500	2.4W	LD70HC-700
	LD70FC-350		LD70FC-500		LD70FC-700

### LED colour options

Extra Warm White (2700K)	/LW27
Warm White (3000K)	/LW30
White (4000K)	/LW40
Cool White (5000K)	/LW50

### Beam / lens angle options

30° Medium	/MB
55° Wide	/WB

### Finish options

Bezel - paint finish white (RAL 9016) / silver / black / RAL / antique bronze / antique brass  
See our finishes guide for more detailed information on available finishes

**Driver requirements** - See LD70-OP table for driver information

## LD70-OP



Product code      LED colour      Bezel finish

LD70-OP - 350  
- 500  
- 700

Example: LD70-OP-350 / LW30 / RAL 9001

### Product codes with output options

350mA	LD70-OP-350	500mA	LD70-OP-500	700mA	LD70-OP-700
1.2W		1.7W		2.4W	

### LED colour options

Extra Warm White (2700K)	/LW27
Warm White (3000K)	/LW30
White (4000K)	/LW40
Cool White (5000K)	/LW50

### Finish options

Bezel - paint finish white (RAL 9016) / silver / black / RAL / antique bronze / antique brass  
See our finishes guide for more detailed information on available finishes

### Use with 350mA, 500mA and 700mA constant current LED drivers

We have a wide range of dimmable LED drivers, 0-10V, DMX, DALI and Mains dimmable. Please see the downloads section on our website:

To run 1-14 LD70\*\*-350 in series use a TXDEL350D (0-10V dimmable)

To run 1-14 LD70\*\*-500 in series use a TXDEL500D (0-10V dimmable)

To run 1-13 LD70\*\*-700 in series use a TXDEL700D (0-10V dimmable)

## LD70D



Product code      LED colour      Lens angle      Bezel finish

LD70D - 350  
- 500  
- 700

Example: LD70D-350 / LW30 / MB / RAL 9001

### Product codes with output options

350mA	LD70D-HC-350	500mA	LD70D-HC-500	700mA	LD70D-HC-700
1.2W	LD70D-FC-350	1.7W	LD70D-FC-500	2.4W	LD70D-FC-700

### LED colour options

Extra Warm White (2700K)	/LW27
Warm White (3000K)	/LW30
White (4000K)	/LW40
Cool White (5000K)	/LW50

### Beam / lens angle options

12° Narrow Spot	/NB
31° Medium	/MB
48° Wide	/WB

### Finish options

Bezel - paint finish white (RAL 9016) / silver / black / RAL / antique bronze / antique brass  
See our finishes guide for more detailed information on available finishes

**Driver requirements** - See LD70-OP table for driver information